

[Analyze](#)

Mobile



Desktop



Discover what your real users are experiencing

This URL

[Origin](#)

Core Web Vitals Assessment: **Failed** [?](#)

[Expand view](#)

Largest Contentful Paint (LCP)

2.7 s



First Input Delay (FID)

25 ms



Cumulative Layout Shift (CLS)

0.06



OTHER NOTABLE METRICS

First Contentful Paint (FCP)

1.8 s



Interaction to Next Paint (INP) [?](#)

174 ms



Time to First Byte (TTFB) [?](#)

0.8 s



Latest 28-day collection period



Various desktop devices

Many samples ([Chrome UX Report](#))

Full visit durations



Various network connections



All Chrome versions



Diagnose performance issues

Performance

Values are estimated and may vary. The [performance score is calculated](#) directly from these metrics. [See calculator.](#)

▲

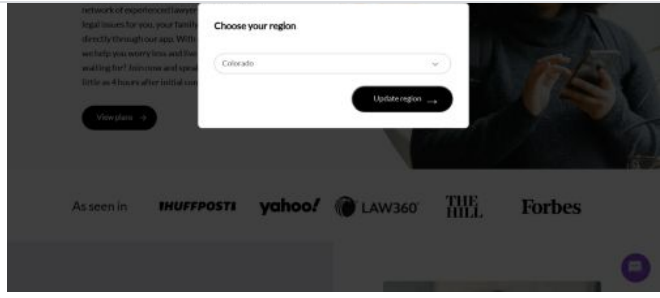
0–49

■

50–89

●

90–100



METRICS

Expand view

● First Contentful Paint

0.7 s

▲ Speed Index

4.9 s

■ Largest Contentful Paint

1.5 s

▲ Time to Interactive

6.0 s

▲ Total Blocking Time

560 ms

● Cumulative Layout Shift

0.099

 Captured at Aug 5, 2022, 8:17 AM

 Emulated Desktop with Lighthouse

 Single page load

PDT

9.64

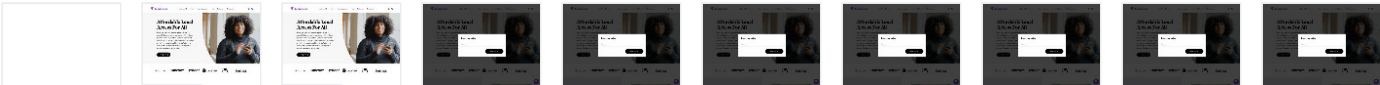
 Initial page load

 Custom throttling

 Using HeadlessChromium

102.0.5005.115 with Ir

 [View Treemap](#)



Show audits relevant to: [All](#) [FCP](#) [TBT](#) [LCP](#) [CLS](#)

OPPORTUNITIES

Opportunity	Estimated Savings
<div>▲ Reduce initial server response time</div>	<div><div></div>0.58 s</div>
<div>■ Serve images in next-gen formats</div>	<div><div></div>0.37 s</div>
<div>■ Eliminate render-blocking resources</div>	<div><div></div>0.3 s</div>

DIAGNOSTICS

- ▲ Avoid an excessive DOM size — 3,910 elements ▼
- ▲ Ensure text remains visible during webfont load ▼
- ▲ Does not use passive listeners to improve scrolling performance ▼
- ▲ Registers an `unload` listener ▼
- ▲ Minimize main-thread work — 7.2 s ▼
- ▲ Serve static assets with an efficient cache policy — 25 resources found ▼
- ▲ Reduce JavaScript execution time — 4.2 s ▼
- Avoid enormous network payloads — Total size was 3,471 KiB ▼
- Avoid chaining critical requests — 15 chains found ▼
- Keep request counts low and transfer sizes small — 275 requests • 3,471 KiB ▼
- Largest Contentful Paint element — 1 element found ▼
- Avoid large layout shifts — 5 elements found ▼
- Avoid long main-thread tasks — 14 long tasks found ▼
- Avoid non-composited animations — 1 animated element found ▼

More information about the performance of your application. These numbers don't [directly affect](#) the Performance score.

PASSED AUDITS (21)

[Show](#)

Documentation

Learn about Web Performance

Ask questions on Stack Overflow


Mailing list

Web Fundamentals

Case Studies

Podcasts

Youtube

Google Developers

[Chrome](#)

[Firebase](#)

[All products](#)

Terms and Privacy Policy

For details, see the [Google Developers Site Policies](#).